

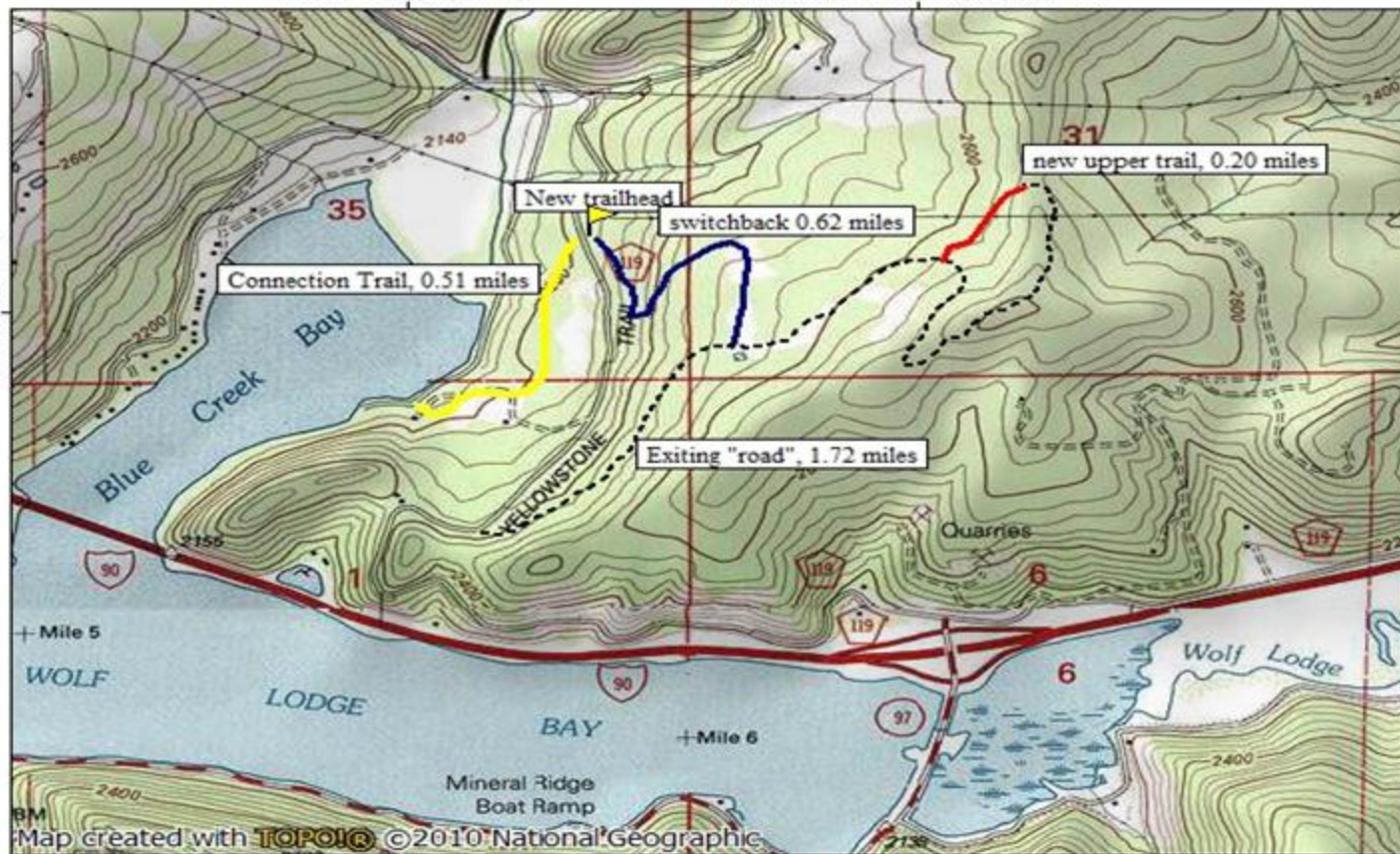
TOPO! map printed on 01/04/12 from "blue_creek.tpo"

116°40.000' W

WGS84 116°39.000' W

47°38.000' N

47°38.000' N

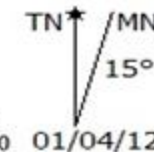
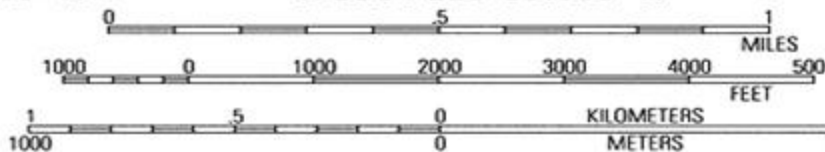


Map created with TOPO! ©2010 National Geographic

116°40.000' W

WGS84 116°39.000' W

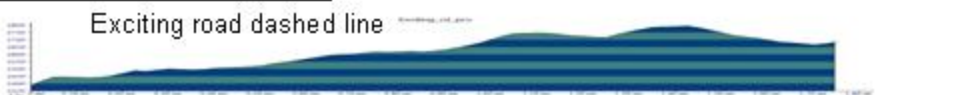
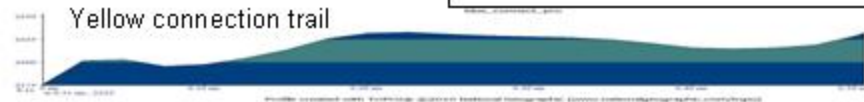
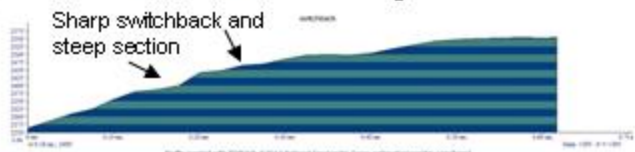
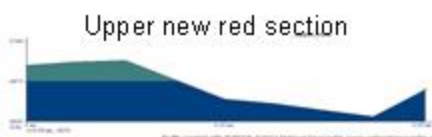
Blue Creek Bay Trails-MTB, XC



01/04/12

A new BLM area under development with short single track and narrow forest road trails. Close to town and low elevation makes for early and late mountain and cross bike riding.

Close to town
 New trailhead parking. The "yellow connection trail" is an easy fun single track. The switchback trail has a steep section that is more expert. The rest of the system is perfect for the beginner and intermediate trail riding.



No warranty is made by Bicycle Sales & Service as to accuracy, or completeness of these data for individual or aggregated use with other data.

www.bicycleservice.com
 208-667-8969

Bicycle Sales & Service

Coeur d'Alene, Idaho